

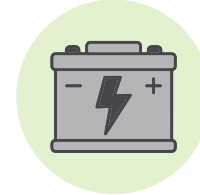
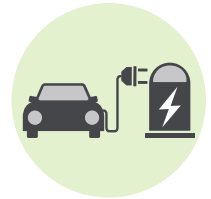
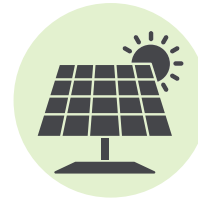
Graphite

Highlights

Ontario has several advanced exploration projects and active graphite exploration programs.



The Black Donald Mine, located approximately 100 km southwest of Ottawa, produced 77,000 tonnes of graphite between 1896 and 1954 which is approximately 75% of Ontario's graphite production to date.



Graphite has been used traditionally in high-temperature lubricants, electrical motors and batteries. New uses are being discovered for graphite including lithium-ion batteries, solar power, electric vehicles.

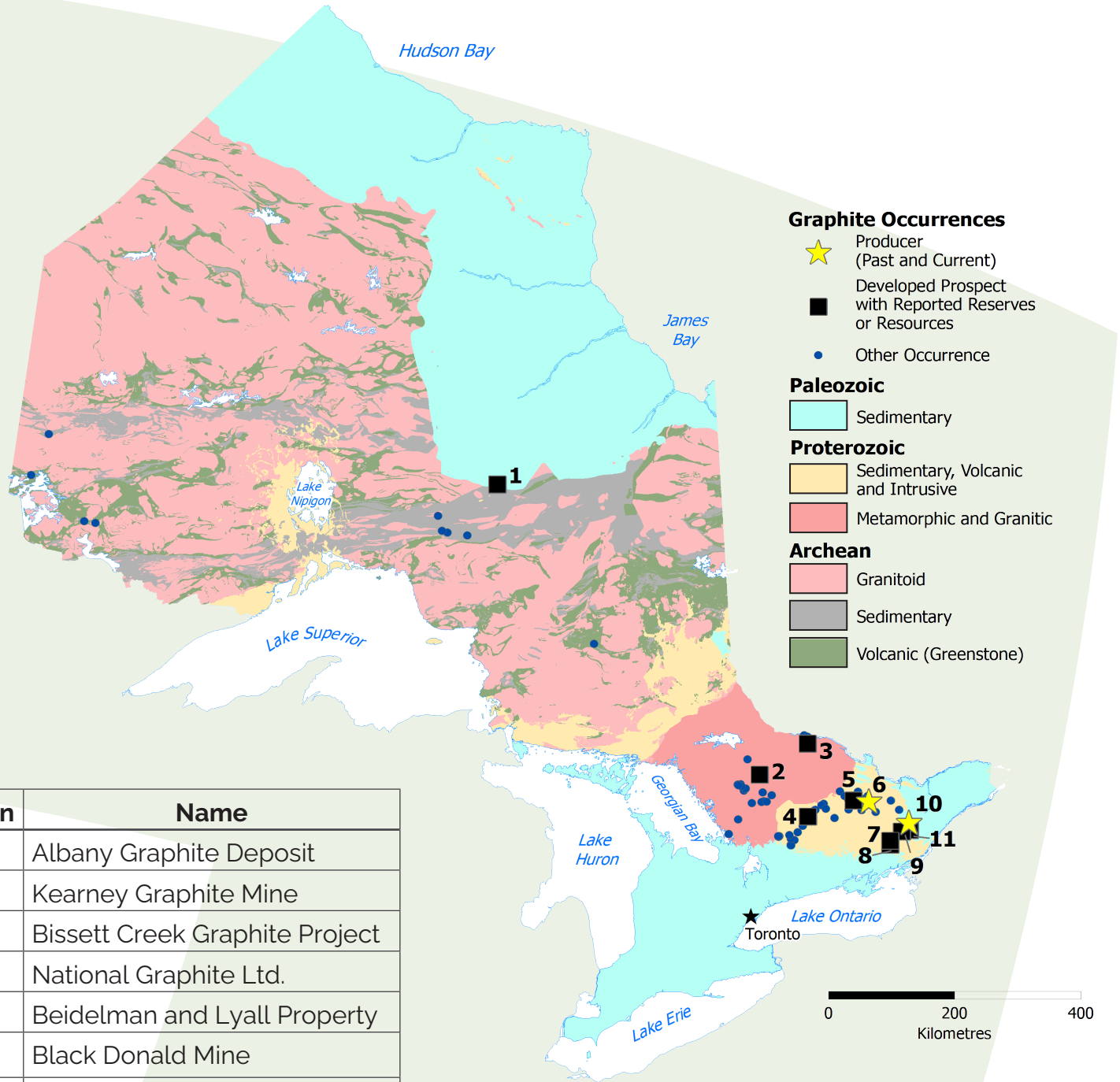
Demand for this strategic commodity is expected to increase as the market for batteries to power electric vehicles and other clean technologies grows.

Ontario's investment advantages

World's largest mining capital market: Toronto Stock Exchange (TSX) & TSX Venture Exchange

- Global leader in mining
- Open to global investment
- Committed mining communities
- Political stability
- Competitive business costs and tax regime
- Education and training network
- 100+ years of mineral production
- Government funding and support
- Canadian economic powerhouse
- Diverse and widespread mineral deposits

Graphite in Ontario



Location	Name
1	Albany Graphite Deposit
2	Kearney Graphite Mine
3	Bissett Creek Graphite Project
4	National Graphite Ltd.
5	Beidelman and Lyall Property
6	Black Donald Mine
7	Meadow Lake Zone
8	Stewart Lake
9	N.A. Timmins Graphite
10	Globe Graphite
11	Portland Graphite

Note: All monetary values are in Canadian dollars. This information is accurate to April 22, 2024.

Printed in Ontario, Canada on recycled paper. © King's Printer for Ontario, 2024.

For more information about Ontario's mineral resources:



Ontario.ca/mineralsector

mineralsinfo@ontario.ca

+1 888 415-9845

